

Subject - Maths

Class - III

Topic - Subtraction

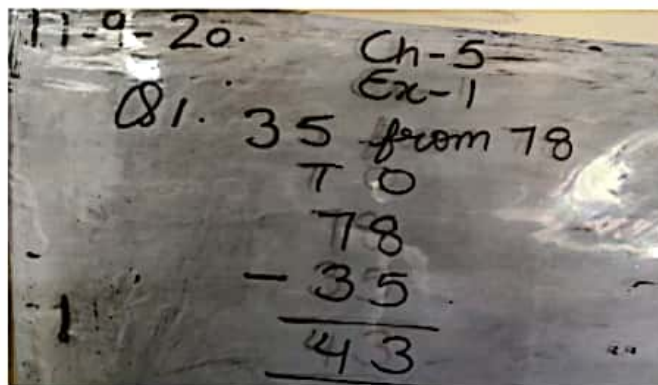
**Exercise-1**

Do you remember .....

Arrange the numbers in columns and subtract : *Do it in notebook*

1. 35 from 78	2. 16 from 48	3. 49 from 88
4. 24 from 52	5. 57 from 92	6. 634 from 836
7. 584 from 999	8. 126 from 338	9. 246 from 726
10. 294 from 643	11. 263 from 554	12. 589 from 761

Do the above questions in notebook. One has been done for you.



**Exercise-2**

Use Cordova Smart Class Software on the smart board in class to do Exercise.

Fill in the boxes :

1. $132 - 0 = \square$	2. $125 - 1 = \square$
3. $489 - 489 = \square$	4. $998 - 0 = \square$
5. $597 - \square = 597$	6. $843 - \square = 0$
7. $\square - 1 = 347$	8. $665 - \square = 665$
9. $999 - 0 = \square$	10. $515 - 515 = \square$

44 Cordova Learning Series MATHEMATICS-3

Note: Answers are given at the back of the book.

## Exercise-3

Use Cordova Smart Class Software on the smart board in class to do Exercise.

*11/9* Subtract :

<b>a</b>	<b>b</b>	<b>c</b>	<b>d</b>
Th H T O	Th H T O	Th H T O	Th H T O
2 6 4 9	4 8 5 2	6 5 7 8	7 9 6 4
-1 4 0 2	-2 4 3 1	-3 5 1 7	-5 2 2 2

2. Which number is greater and by how much? *Do in the notebook as shown below:-*
- |                   |                   |
|-------------------|-------------------|
| (a) 6492 and 6231 | (b) 4444 and 4244 |
| (c) 3365 and 6368 | (d) 2885 and 2997 |
| (e) 5556 and 5334 | (f) 8989 and 8999 |

3. What should be added to 1534 to get 3656? *Do in notebook.*

**(Hint :** Since the sum is 3656, we need to subtract 1534 from 3656 to get the answer.)

*Q2(a) 6492 and 6231*  
*Solu. 6492 is greater.*  
*So,*

Th	H	T	O
6	4	9	2
-	6	2	3
0	2	6	1

*Ans - 6492 is greater than 6231 by 261.*  
*Note:- Greater number will be written first.*

*Ex-3*

*Q3: What should be added to 1534 to get 3656?*  
*Solu.*

Th	H	T	O
3	6	5	6
-	1	5	3
2	1	2	2

*Ans:- 2122 should be added to 1534 to get 3656.*